

M5 Matrix Sign

The new Hazard Matrix Display has been redesigned from the ground up improving upon our already market leading product. Using the latest surface mount LEDs, bespoke optics, fully sealed display housing and a new touch screen O-LED control panel.

Model

Part Number	Description	Voltage
HD0012A	Amber, Fixed Message Display Unit	12-24VDC

Features and Benefits Display System

- Innovative optical design to improve legibility and reduce sunshine washout
- Flexible mounting options - auto text rotation for mounting upside-down
- Easily readable from 100 Metres
- HAZCAN network junction box reduces wiring to the display
- 12-24VDC
- ECE R10, IP67
- Temperature Range: -20°C to +65°C

Features and Benefits Controller

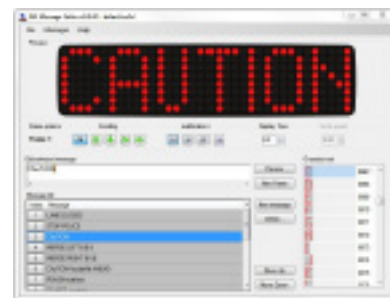
- O-LED graphic touchscreen display
- microSD message storage and firmware update
- PC message programmer
- User configurable startup screen
- ECE R10



O-LED touchscreen controller



Amber matrix display



PC message programmer